



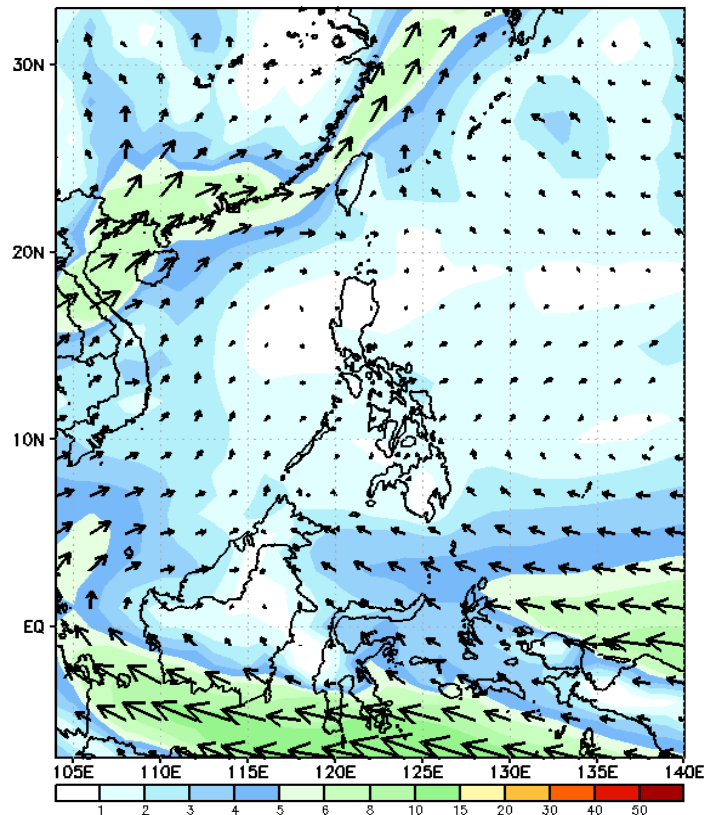
# Week 1 & Week 2 Forecast for the Philippines using GEFS Model



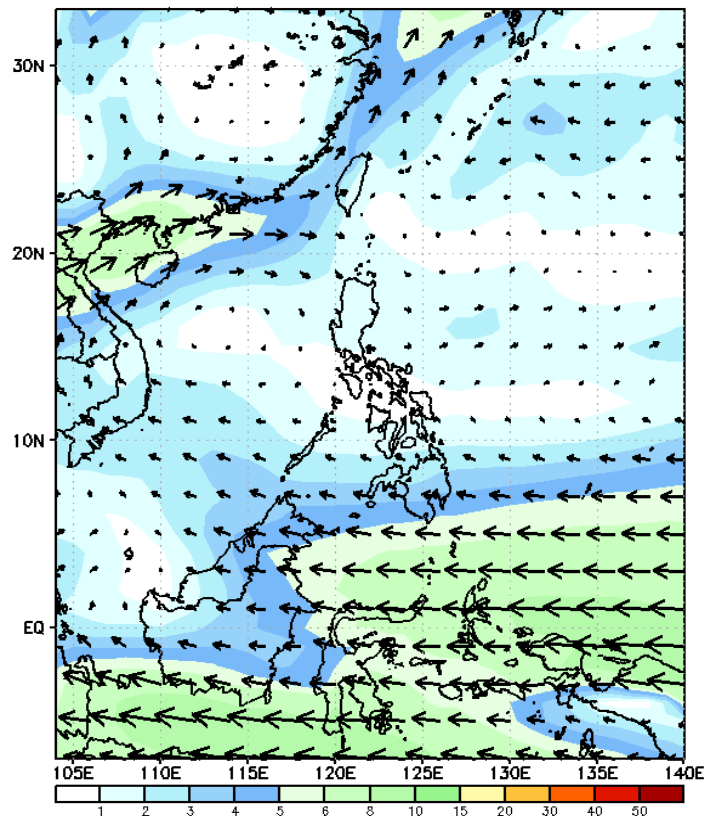
# GEFS Week-1 Wind Forecasts:

Week 1: Aug 21 - 27, 2024

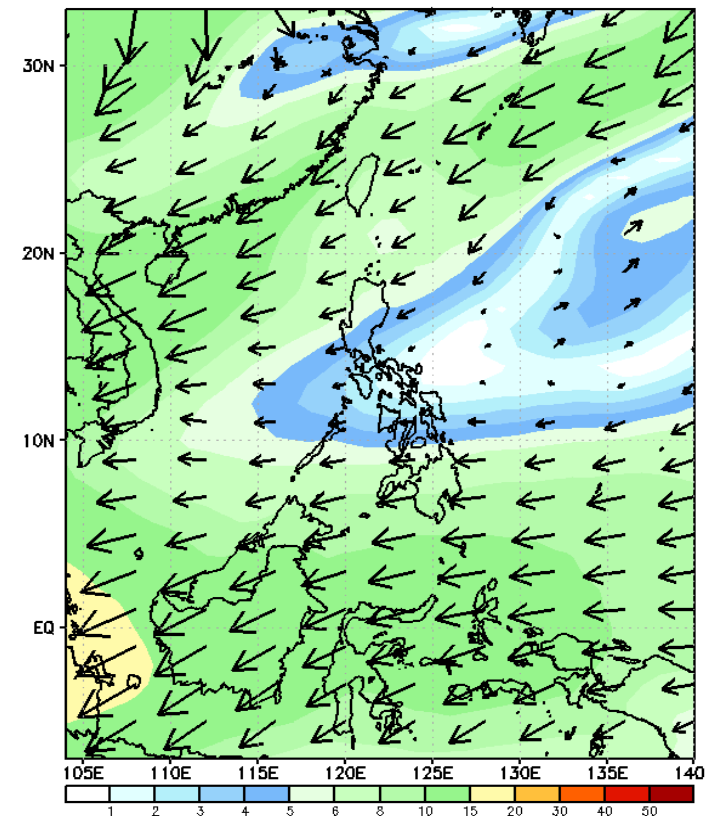
GEFS Week-1 850-hPa Wind Total  
Valid: 20240821 - 20240827



GEFS Week-1 700-hPa Wind Total  
Valid: 20240821 - 20240827

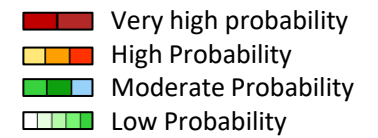


GEFS Week-1 200-hPa Wind Total  
Valid: 20240821 - 20240827



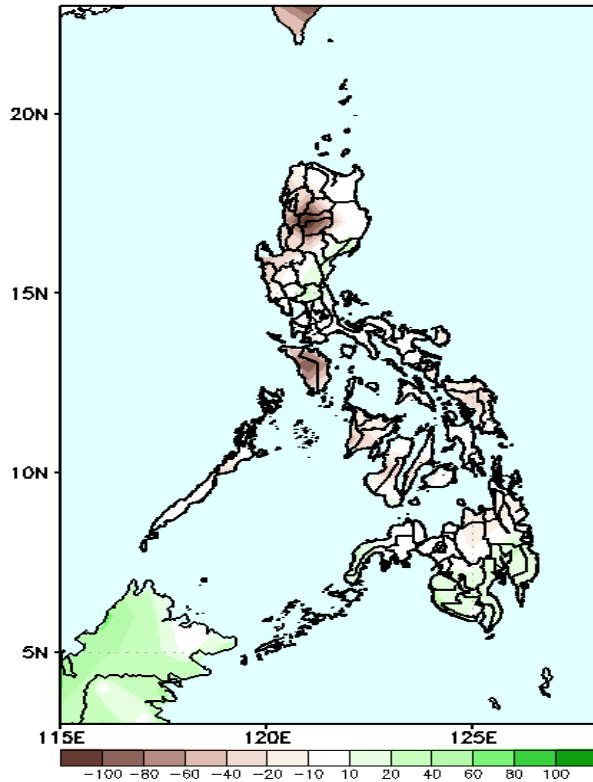
Southwest Monsoon affecting extreme Northern Luzon while Easterlies affecting the rest of the country.

# Precipitation Anomaly and Exceedance Probability > 25/50 mm

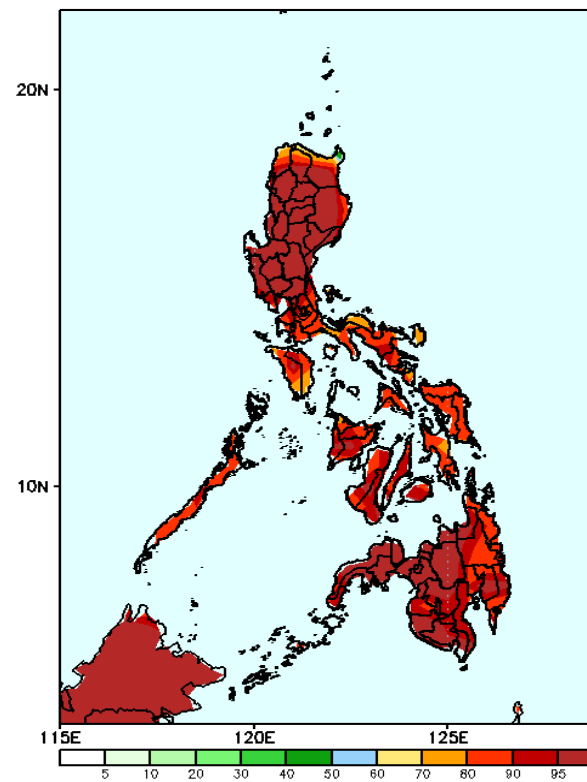


Week 1: Aug 21 - 27, 2024

GEFS Week-1 Precip Anomaly  
Valid: 20240821 - 20240827



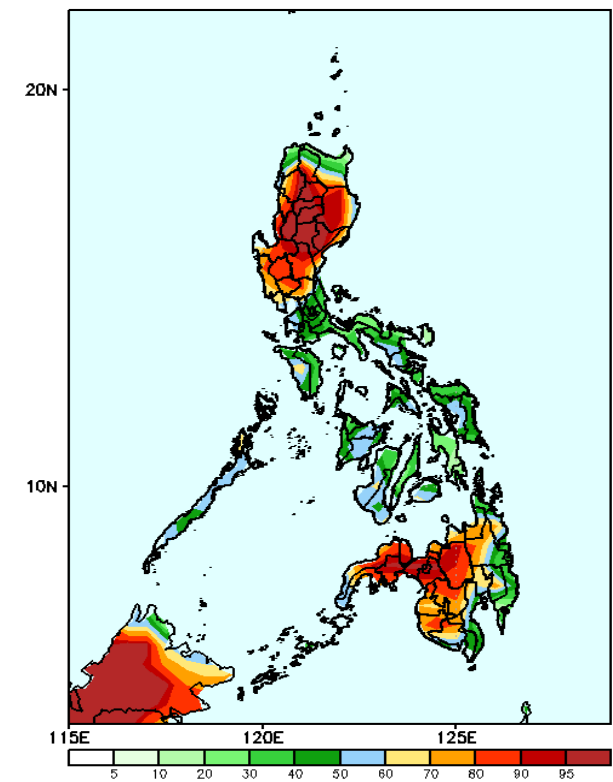
GEFS Week-1 Exceedance Prob. > 25mm  
Valid: 20240821 - 20240827



## Probability to Exceed 25mm

- High to very high over most parts of Mindanao;

GEFS Week-1 Exceedance Prob. > 50mm  
Valid: 20240821 - 20240827

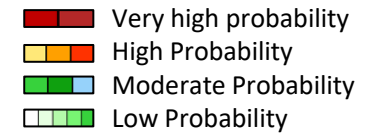


## Probability to Exceed 50mm

- High to very high over Central Luzon, most of Northern Luzon, and most of the western Mindanao;
- Moderate to high over NCR, Occidental Mindoro, Palawan, Bohol, portions of Western Visayas, and the rest of Mindanao;
- Low to moderate over the rest of the country.

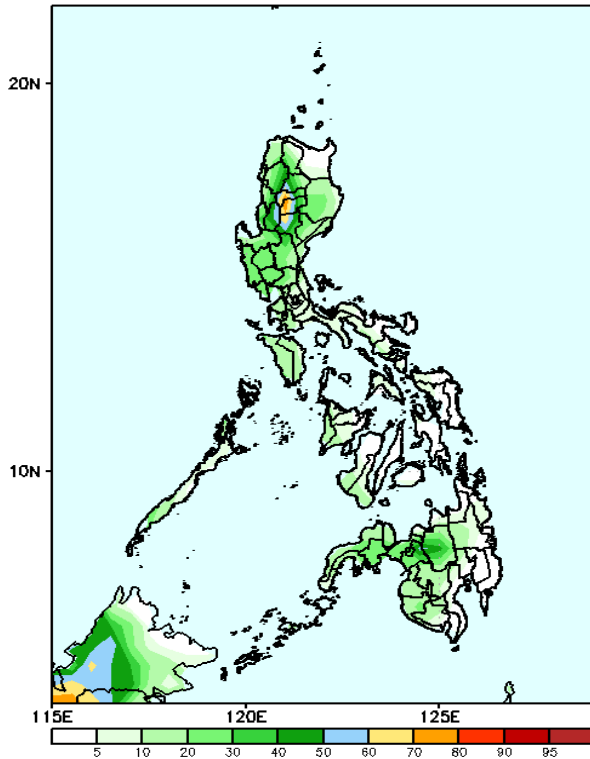
Rainfall deficit of more than 100mm in some parts of CAR and Mindoro provinces; 20-40mm for the rest of the country except in South and Central Mindanao where 20-40mm increase in rainfall is likely.

# Exceedance Probability > 100/150/200 mm



Week 1: Aug 21 - 27, 2024

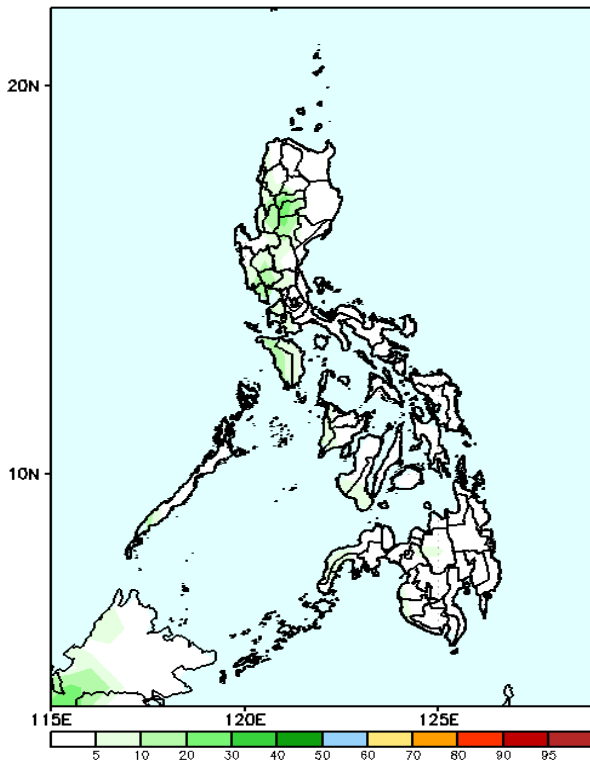
GEFS Week-1 Exceedance Prob. > 100mm  
Valid: 20240821 - 20240827



### Probability to Exceed 100mm

- Moderate to high over Mountain Province, Ifugao, and Nueva Vizcaya;
- Low to moderate over the rest of the country.

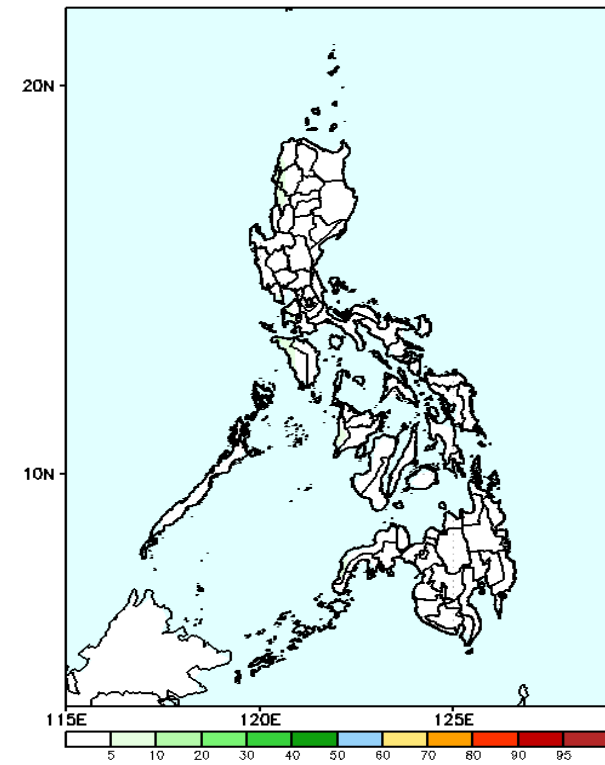
GEFS Week-1 Exceedance Prob. > 150mm  
Valid: 20240821 - 20240827



### Probability to Exceed 150mm

- Low across the country.

GEFS Week-1 Exceedance Prob. > 200mm  
Valid: 20240821 - 20240827



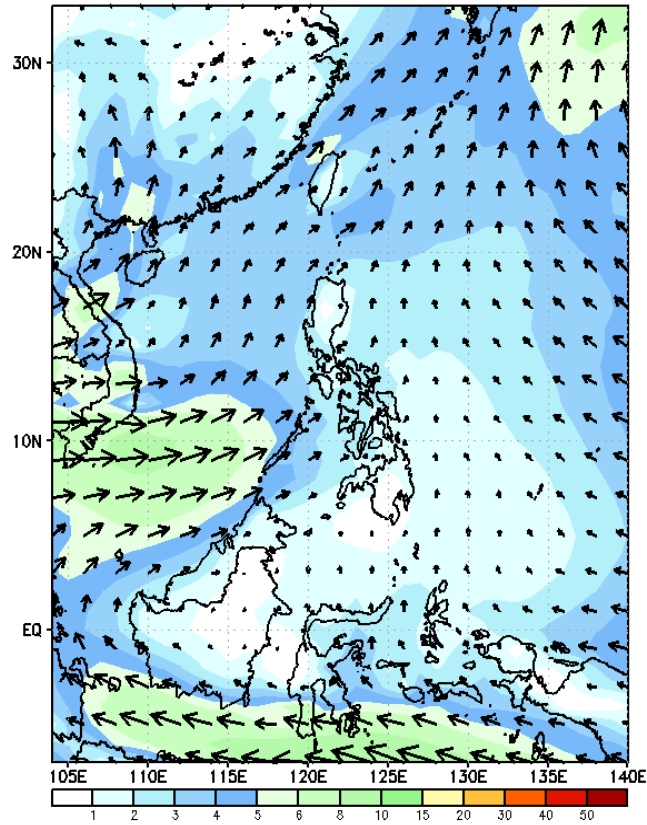
### Probability to Exceed 200mm

- Low across the country.

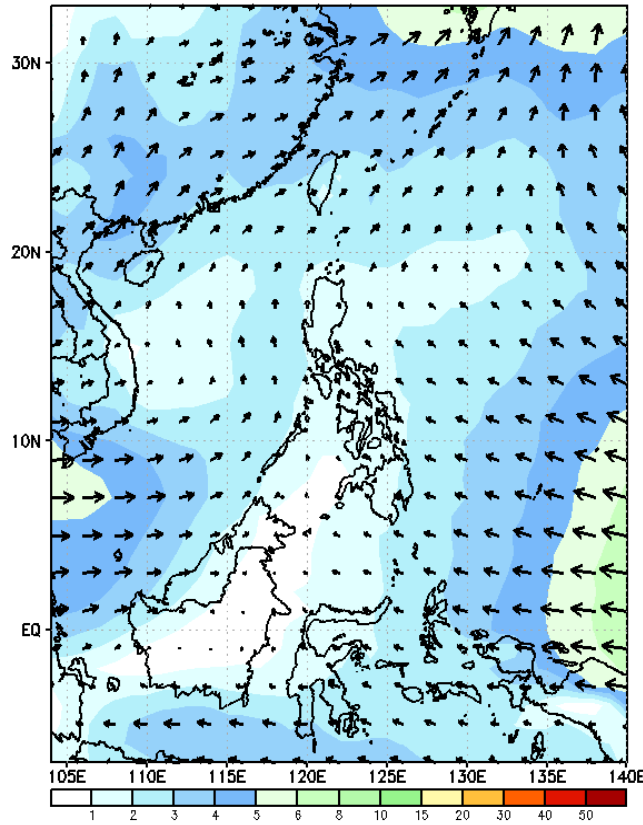
# GEFS Week-2 Wind Forecasts:

Week 2: Aug 23-29, 2024

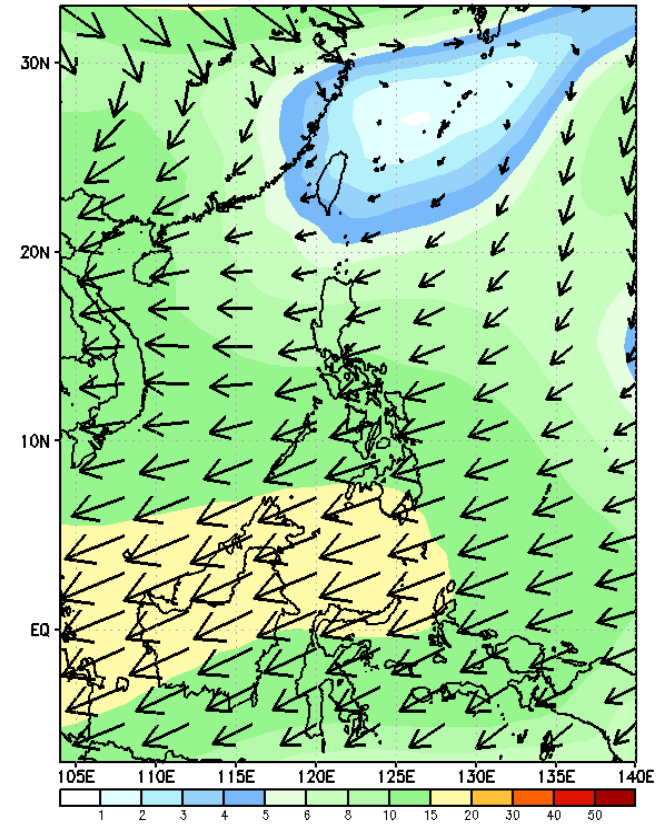
GEFS Week-2 850-hPa Wind Total  
Valid: 20240828 - 20240903



GEFS Week-2 700-hPa Wind Total  
Valid: 20240828 - 20240903

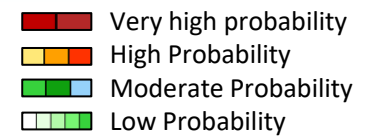


GEFS Week-2 200-hPa Wind Total  
Valid: 20240828 - 20240903



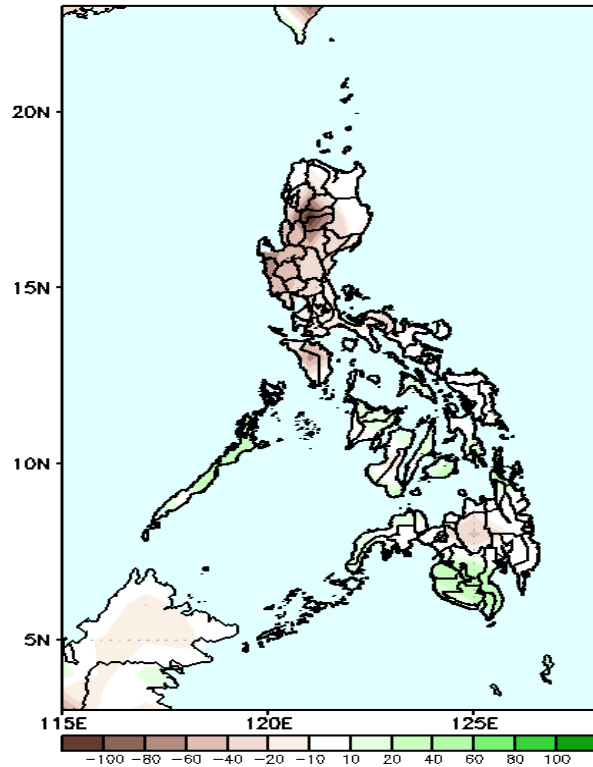
Weak Southwest Monsoon affecting the western section of Luzon and Visayas while Easterlies affecting the rest of the country.

# Precipitation Anomaly and Exceedance Probability > 25/50 mm

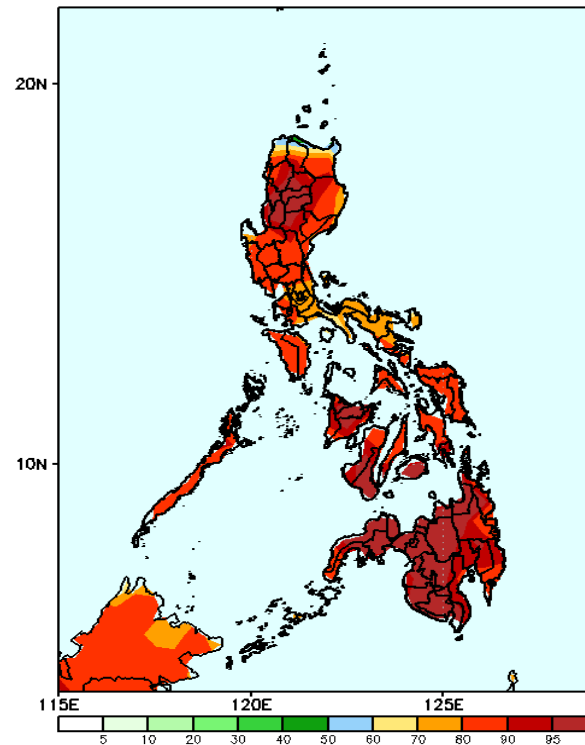


Week 2: Aug 23-29, 2024

GEFS Week-2 Precip Anomaly  
Valid: 20240828 - 20240903



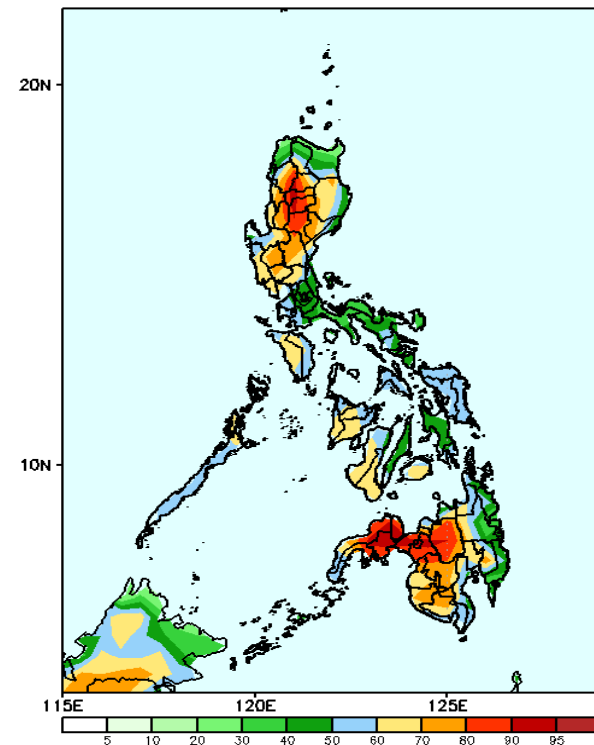
GEFS Week-2 Exceedance Prob. > 25mm  
Valid: 20240828 - 20240903



## Probability to Exceed 25mm

- High to very high across the country.

GEFS Week-2 Exceedance Prob. > 50mm  
Valid: 20240828 - 20240903

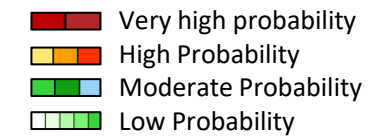


## Probability to Exceed 50mm

- Moderate to high over most parts of Northern and Central Luzon, NCR, MIMAROPA, Western Visayas, Negros Region, Bohol, and most parts of Mindanao;
- Low to moderate over the rest of the country.

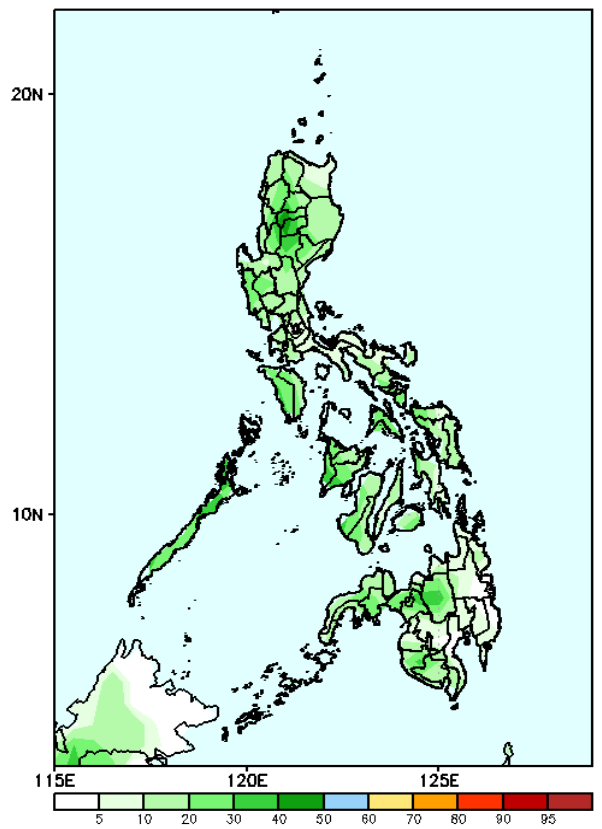
Rainfall deficit of more than 100mm in some parts of CAR and Mindoro provinces; 20-60mm for the rest of the country except in Palawan, Bohol and SOCCSKARGEN where 20-60mm increase in rainfall is likely.

# Exceedance Probability > 100/150/200 mm



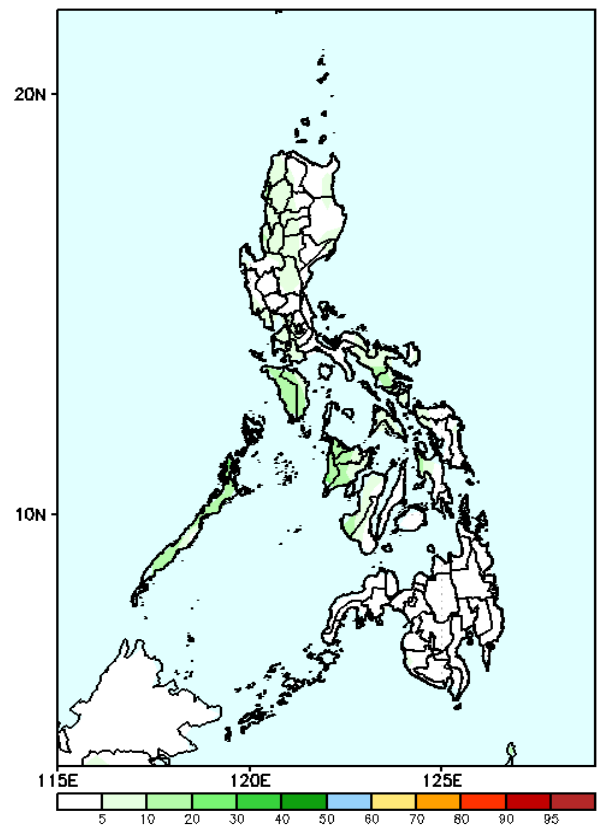
Week 2: Aug 23-29, 2024

GEFS Week-2 Exceedance Prob. > 100mm  
Valid: 20240828 - 20240903



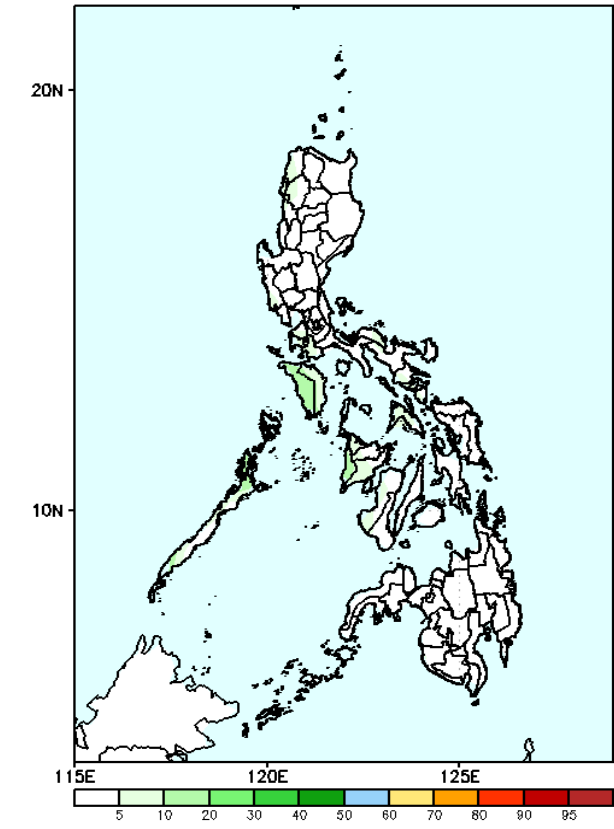
**Probability to Exceed 100mm**  
• Low probability across the country.

GEFS Week-2 Exceedance Prob. > 150mm  
Valid: 20240828 - 20240903



**Probability to Exceed 150mm**  
• Low probability across the country.

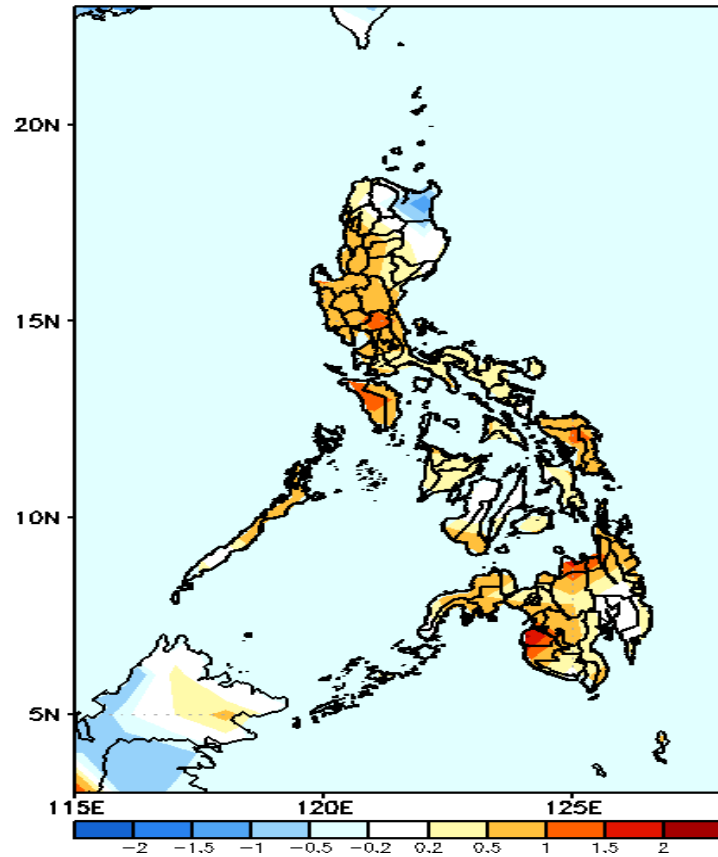
GEFS Week-2 Exceedance Prob. > 200mm  
Valid: 20240828 - 20240903



**Probability to Exceed 200mm**  
• Low probability across the country.

# GEFS Week-1 & 2 Forecasts: T2m Anomaly

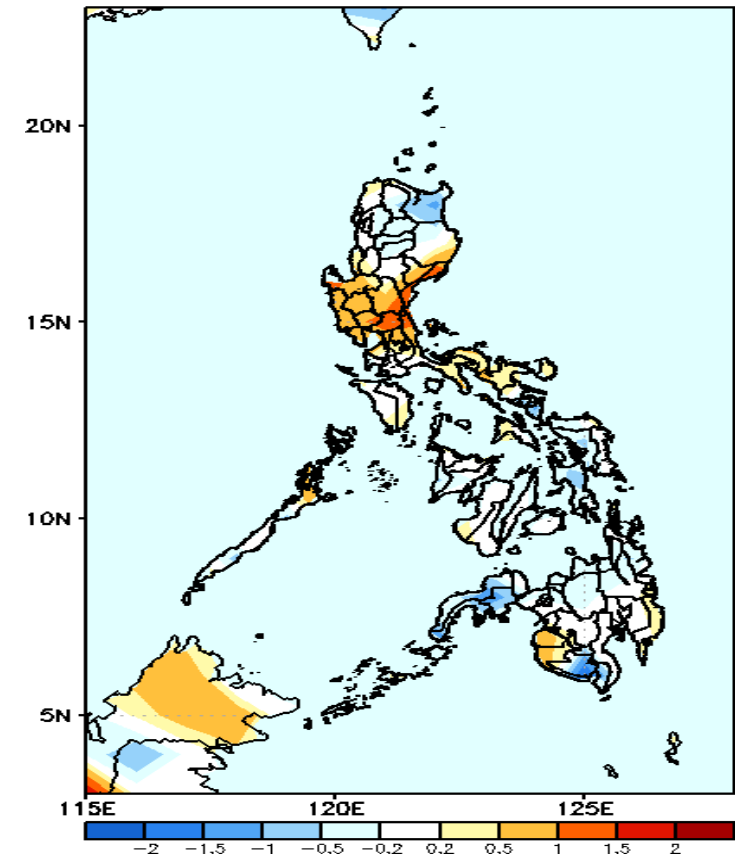
GEFS Week-1 T2m Anomaly  
Valid: 20240821 - 20240827



## 2m Temperature Week 1: Aug 21 - 27, 2024

Near to warmer surface air temperature will likely be experienced in most parts of the country except in Cagayan where slightly cooler than average surface air temperature is expected.

GEFS Week-2 T2m Anomaly  
Valid: 20240828 - 20240903



## 2m Temperature Week 2: Aug 28 - Sep 03, 2024

Near to warmer surface air temperature will likely be experienced in most parts of the country except in Cagayan, Sorsogon, Eastern Visayas, South Cotabato, and Zamboanga Peninsula where slightly cooler than average surface air temperature is expected.